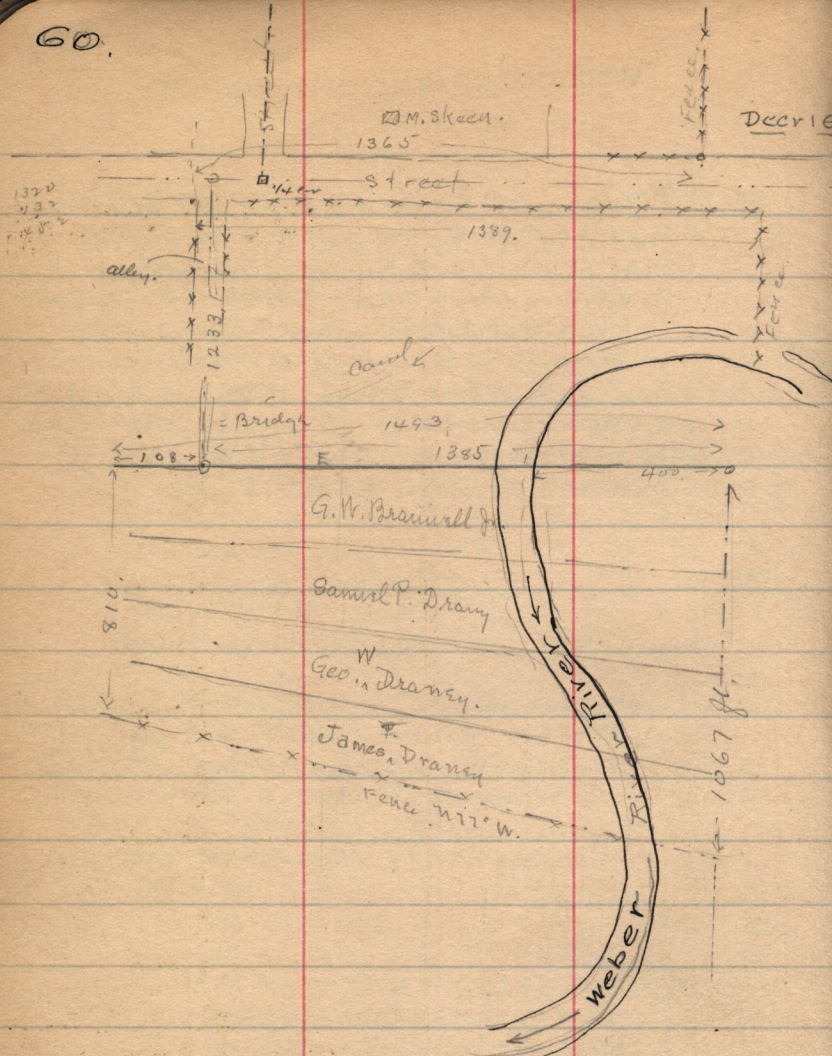


N.W. Cor. Sec. 26 T. 7. N.
R. 2. W.



33-152 - Robert B. Lewis to Mary J. Draney - Samuel P. Draney
James Draney - Geo. W. Draney - + Sabella Brannell
Pt SE 1/4 SW 1/4 Sec. 5 T. 6. N - R. 2. W. Bsq. on W. line
SE 1/4 Sec. 5 60° R. S. 57° 57' W. of N. W. cor rd 1/4 - 55° 57' W
66.6 Rods 581° E. 72 R. 72.92 chs to center of Weber R
N. along river to pt E. of bsq. W. to bsq. also Prsq. SE
Cor. SW 1/4 Sec. 5. W. & R. 795.4 R. 8 & R. 5 to bsq.

See Plat Book
page 51

$\sin 81^\circ = 0.9876 \times 72 R. = 71.1 R. = 1173.26 \text{ ft.}$
 $\cos 81^\circ = 0.1564 \times 72 R. = 11.26 \text{ ft}$